

Monthly Weather Summary in Thailand May 2016

In May 2016, hot weather still persisted in Thailand nearly the whole month especially in the northern and upper central parts where successive of very hot weather was presented in several areas during the first half of May because of the consecutive of low pressure area covering upper Thailand during that time as well as the new highest record of maximum temperature was established. Mean temperature for every part was higher than normal while value for the whole area was 30.6 °C, 1.8°C above normal. For rainfall, during the first half of the period, intermittent rainfall was observed with the occurrence of thunderstorms with gusty wind in many places of the northern and northeastern parts whereas less rainfall was found in the rest parts. During the second half of May, due to the influence of the southwesterly wind prevailing over the Andaman, southern parts and the Gulf of Thailand since mid-month coupled with the existing of tropical cyclone “ROANU (01B)” in the Bay of Bengal during May 18-22 and the covering of the low pressure cell over the Gulf of Tonkin on May 29 caused increasing in areas of consecutive rainfall leading to rainy season of Thailand on May 18. However monthly rainfall was lower than normal in most parts i.e. northern part 53.0 mm (30%), northeastern part 19.2 mm (10%), central part 52.9 mm (31%), eastern part 76.1 mm (34%) and southern part (east coast) 55.2 mm (36%) except for southern part (west coast) was higher than normal 224.0 mm (72%)

1 - 10 May : The heat low pressure cell covered upper Thailand coupled with the confluence of the southeasterly and southwesterly winds over the northern, northeastern, central and eastern parts during the first half of the period with the prevailing of the southeasterly wind over the northeastern, central and eastern parts during the second half of the period. These conditions caused swelter weather in Thailand in particular northern and upper central parts experienced consecutive very hot day in several places. The highest temperature reached 44.0°C at Thap Phueng, Si Samrong in Sukhothai province on May 7. For rainfall, intermittent rainfall was observed in the northern and northeastern parts with the maximum daily rainfall of 75.0 mm at Kong in Nakhon Ratchasima province on May 6 and at Pak Chong agrometeorological station in Nakhon Ratchasima on May 7. Thundershower with gusty wind occurred at Chiang Rai, Sukhothai, Nan Phayao, Kamphaeng Phet, Phitsanulok, Pichit, Yasothon, Amnat Chareon, Nakhon Ratchasima and Khon Kaen provinces on May 4 and at Surin province on May 5 and at Mae Hong Son, Nong Khai and Mahasarakham on May 6 and at Phetchabun, Loei, Nakhon Phanom, Chaiyaphum, Nakhon Ratchasima, Chon Buri and Rayong provinces on May 7 and at Phetchabun, Nakhon Phanom, Si Sa Ket and Amnat Charoen provinces on May 10. In southern part, hot weather remained with very hot in some areas. The maximum temperature climbed up to 40.0°C at Chawang in Nakhon Si Thammarat province on May 9 and 10. There was isolated to scattered rain with heavy rainfall in some areas mainly in the west coast. The highest daily rainfall was 50.2 mm at Wang in Narathiwat province on May 7. Thundershower with gusty wind occurred at Phang-nga on May 4.

11 - 20 May: Dominated by the heat low pressure cell, it was hot in upper Thailand during early period. After that, increasing rain and thunderstorms associated with the high pressure areas from China extending its ridge to cover the northern and northeastern parts during mid-period and the starting of the southwest monsoon over the Andaman Sea, southern

Thailand and the Gulf of Thailand since May 18. The heaviest daily rainfall in upper Thailand was 107.0 mm at Nong Han in Udon Thani province on May 12. While local weather was generally hot with very hot in some areas with the highest maximum temperature was 44.5°C at Thap Phueng, Si Samrong in Sukhothai province on May 11. Thundershower with gusty wind occurred at Amnat Charoen and Mukdahan on May 11, and at Phetchabun, Kamphaeng Phet, Bueng Kan and Chaiyaphum provinces on May 12 and at Phetchabun and Loei provinces on May 13 and at Phayao, Chiang Mai, Lampang, Mahasarakham, Nakhon Phanom, Surin, Nakhon Ratchasima, Ubon Ratchathani, Phra Nakhon Si Ayutthaya and Trat provinces on May 15 and at Chiang Mai, Lampang Rayong and Trat provinces on May 16 as well as flash flooding at Phisanulok province on May 19. In southern part, hot weather almost the whole areas with very hot in some areas along the east coast, the highest temperature of 41.4 °C was measured at Phun Phin, Surat Thani province on May 11. For rainfall, isolate rain was found during the first half of the period after that it was increasing with scattered to fairly widespread rain and heavy to very heavy rainfall in some areas, the maximum daily rainfall was 100.0 mm at Kian Sa in Surat Thani province on May 17.

21 - 31 May : Under the influence of active southwest monsoon over the Andaman Sea, southern part and the Gulf of Thailand, the tropical cyclone “ROANU (01B)” in the Bay of Bengal making landfall over Bangladesh as tropical depression in the afternoon of May 21 before weakening to active low pressure cell covering western of Myanmar on the following day and the prevailing of the southeasterly wind over lower northern, northeastern, central and eastern parts during late period as well as the low pressure cell covering the Gulf of Tonkin on May 29. The weather in upper Thailand was wetter with abundant rainfall nearly the whole period and heavy to very heavy rainfall in some areas mainly in the northern and northeastern parts. The highest daily rainfall was 149.2 mm at Amphoe Muaeng in Nong Khai province on May 29. However, hot weather remained in upper Thailand with very hot in some areas during late period, the highest temperature of 40.9 °C was measured at Thap Phueng, Si Samrong in Sukhothai province on May 28. For southern part, there was plentiful of rain especially along the west coast that received widespread rain with heavy to very heavy rainfall in many places almost the whole period, the 190.4 mm highest rainfall amount was recorded at Takua Pa in Phang-nga provinces on May 24. Gusty wind was reported at Songkhla and Narathiwat provinces on May 24. Floods occurred at Phuket and Krabi provinces on May 26 with mudslide at Phang-nga province on May 28.

Breaking record of daily maximum temperature over Thailand in May 2016

Station	New Record 2016		Previous Record		Start Year
	Temperature(°C)	Date	Temperature(°C)	Date / Year	
Chiang Rai Agromet. Stn.	41.8	12	40.3	2/1980	1979
Mae Sariang	43.0	15	42.7	8/1967	1952
				6/1998	
Phayao	41.5	12	40.7	10/1992	1981
Chiang Mai	42.5	11	42.4	1/2005	1952
Tha Wang Pha	41.8	12	41.4	9/1992	1970
Lamphun	44.0	12	42.3	6/1992	1981
Lampang	43.4	10	41.6	7/2010	2004
Phrae	43.2	11	43.0	10/2010	1952
Uttaradit	43.6	11	43.3	15/1963	1951
Thap Phueng, Si Samrong, Sukhothai	44.5	11	42.8	10/2010	2000
Si Samrong Agromet. Stn.	43.0	11	42.2	22,23/1983	1969
				9/1992	
Tak	43.8	7,11	43.0	5/1969	1954
Bhumibhol Dam	43.9	11	43.0	2/1998	1960
Mae Sot	41.8	7	41.6	9,11/1998	1951
Umphang	40.0	7	39.5	4/1998	1978
Doi Muser Agromet. Stn.	36.9	7	35.7	9/1998	1993
Phichit Agromet. Stn.	42.3	6	40.7	2/1983	1993
Phitsanulok	42.7	11	42.0	2/1980	1951
Kamphaeng Phet	43.6	10,12	41.8	22/1983	1981
Ubon Ratchathani Agromet. Stn.	40.5	11	39.8	1/1973	1970
Surin Agromet. Stn.	41.2	13	41.0	6/2010	1969
Nakhon Ratchasima	41.8	11	41.4	12/1970	1951
Chok Chai	40.7	11	40.2	1,4/1998	1970
Pak Chong Agromet. Stn.	39.0	11	38.5	7/1997	1969
Nakhon Sawan	43.7	7	42.7	16/1963	1951
Tak Fa Agromet. Stn.	41.5	6	41.2	10/2010	1969
Chainat Agromet. Stn.	41.7	13	41.4	10/2010	1970
Bua Chum	42.6	7	41.8	10/2010	1970
Thong Pha Phum	42.3	7,13	41.5	1/1983	1970
Ratchaburi Agromet. Stn.	39.7	9,13	39.5	1/1993	1993
				12/1998	
				5/2005	
Ayutthaya Agromet. Stn.	41.7	13	40.4	1/1998	1994

Station	New Record 2016		Previous Record		Start Year
	Temperature(°C)	Date	Temperature(°C)	Date / Year	
Pathumthani Agromet. Stn.	41.0	13	39.8	9/2010	1998
Sa Kaeo	40.9	5	40.3	6/2005	1998
Chon Buri	39.3	2,6,9	39.0	10/2010	1951
Ko Sichang	38.0	16	36.2	5/1960	1959
Phattaya	36.3	12	36.0	8/1992	1981
Chanthaburi	37.0	5,7,12	36.8	1/1960	1951
Phlew Agromet. Stn.	37.2	14	36.1	4/1998	1969
Phetchaburi	38.7	25	38.5	18/2010	1981
Hua Hin	38.7	22,26	38.0	14/2012	1951
Surat Thani	41.4	11	39.8	11/2010	1988
Phra Saeng	39.8	5,12	38.6	2/2005	1998
Nakhon Si Thammarat Agromet. Stn.	38.1	12	37.7	5/2005	1984
Chawang	40.6	13	39.5	2/2005	1998
Phatthalung Agromet. Stn.	37.7	12	37.3	27/2010	1981
Hat Yai	38.5	4	38.3	7/2010	1973
Sa Dao	38.6	5	38.0	10/2010	1999
Yala Agromet. Stn.	39.8	2	38.8	4,5/1998	1982
Phuket	37.9	9,5,10	37.8	11/1998	1952
Satun	38.1	3	37.8	5/1998	1978

Note : Rainfall, temperatures and natural disasters in this report were updated up to June 6, 2016

Climatological Center
Meteorological Development Bureau
Meteorological Department

Monthly Current Report
Rainfall and Accumulative Rainfall
May 2016

Northern Thailand

Station	Temperature (°c)		Rainfall (mm)		Accumulative rainfall (mm) Since 1 January	
	Mean	Above or below normal	Actual	Above or below normal	Actual	Above or below normal
Chiang Rai	28.9	1.8	257.1	43.7	299.3	-61.5
Mae Hong Son	30.9	2.0	89.3	-85.2	130.1	-136.8
Phayao	29.9	2.1	127.3	-52.4	191.9	-122.1
Chiang Mai	31.1	2.9	85.7	-76.3	182.9	-67.3
Tha Wang Pha	29.5	1.4	201.7	18.7	373.8	38.8
Nan	29.9	1.3	275.4	98.1	420.2	94.3
Lamphun	31.1	2.4	153.1	-1.7	213.0	-7.1
Lampang	31.0	2.2	101.9	-58.5	275.4	14.7
Mae Sariang	31.0	2.6	16.9	-145.4	67.0	-162.2
Phrae	31.9	2.9	108.5	-69.6	144.7	-157.7
Uttaradit	32.4	2.6	115.7	-114.3	165.7	-178.7
Bhumibol Dam	32.4	3.2	58.8	-138.8	131.3	-163.0
Tak	32.7	3.1	84.8	-90.1	129.1	-126.3
Mae Sot	30.6	2.7	72.0	-102.2	127.8	-116.6
Umphang	28.2	2.6	95.8	-99.2	152.6	-207.5
Phitsanulok	32.2	2.3	247.0	76.1	290.7	20.0
Lom Sak	30.2	1.6	165.6	14.8	272.3	-7.4
Phetchabun	30.9	2.1	138.7	-24.1	207.6	-100.8
Wichian Buri	31.3	1.9	52.0	-106.1	113.0	-205.9
Kamphaeng Phet	32.6	3.4	49.4	-146.1	77.6	-222.8
Over the area	30.9	2.3	124.8	-53.0 -30%	198.3	-93.9 -32%

Northeastern Thailand

Station	Temperature (°c)		Rainfall (mm)		Accumulative rainfall (mm) Since 1 January	
	Mean	Above or below normal	Actual	Above or below normal	Actual	Above or below normal
Nong Khai	30.2	1.6	379.9	155.0	538.9	165.2
Loei	28.9	1.2	196.7	-2.6	280.4	-83.2
Udon Thani	30.0	1.1	343.7	145.2	466.2	115.6
Nakhon Phanom	29.7	1.3	239.8	-17.3	370.2	-82.1
Sakon Nakhon	30.2	1.8	89.2	-138.4	182.4	-230.0
Mukdahan	30.7	1.9	93.7	-105.8	134.1	-201.7
Khon Kaen	30.5	1.6	103.1	-65.6	235.0	-90.8
Kosum Phisai	31.2	1.9	169.6	8.1	352.9	32.1
Roi Et	31.0	2.0	104.3	-81.8	233.9	-92.1
Chaiyaphum	30.6	1.7	80.6	-59.6	271.2	-31.7
Ubon Ratchathani	30.3	1.3	243.2	34.6	310.3	-33.0
Tha Tum	30.5	1.0	156.3	-16.0	281.4	-43.0
Surin	30.8	2.0	146.4	-33.4	189.9	-145.9
Nakhon Ratchasima	31.0	1.9	87.8	-66.3	147.5	-140.2
Chok Chai	30.6	1.8	102.3	-46.7	181.6	-105.0
Nang Rong	30.2	1.4	149.8	-16.8	247.4	-73.0
Over the area	30.4	1.6	167.9	-19.2 -10%	276.5	-64.9 -19%

- NOTES :
- 1) Mean temperature is the average of daily dry-bulb temperature
 - 2) "T" is trace, rainfall amount less than 0.1 mm.
 - 3) "blank" is incomplete data.
 - 4) Temperature and rainfall are preliminary data.

Monthly Current Report
Rainfall and Accumulative Rainfal
May 2016

Central Thailand

Station	Temperature (°c)		Rainfall (mm)		Accumulative rainfall (mm) Since 1 January	
	Mean	Above or below normal	Actual	Above or below normal	Actual	Above or below normal
Nakhon Sawan	32.6	2.6	148.6	-2.1	156.9	-106.8
Bua Chum	31.4	2.1	121.9	-14.3	134.8	-144.4
Lop Buri	32.0	2.4	28.1	-119.0	122.9	-150.4
Suphan Buri	32.1	2.3	115.2	0.9	204.1	11.2
Thong Pha Phum	30.6	2.5	203.8	-23.7	267.4	-130.1
Kanchanaburi	32.4	2.7	97.3	-48.0	161.4	-112.9
Bangkok Airport	32.0	2.2	136.6	-71.0	217.6	-139.3
Bangkok Metropolis	31.8	1.9	101.7	-146.0	259.5	-155.0
Over the area	31.9	2.4	119.2	-52.9 -31%	190.6	-116.0 -38%

Eastern Thailand

Station	Temperature (°c)		Rainfall (mm)		Accumulative rainfall (mm) Since 1 January	
	Mean	Above or below normal	Actual	Above or below normal	Actual	Above or below normal
Prachin Buri	31.9	2.6	153.4	-77.6	210.5	-211.9
Kabin Buri	30.8	1.9	98.2	-94.1	159.5	-217.0
Aranyaprathet	31.4	2.2	59.5	-108.8	136.9	-202.5
Chon Buri	32.1	2.3	68.7	-106.6	182.0	-139.1
Ko Sichang	31.3	1.7	80.6	-53.8	135.7	-152.2
Pattaya	30.8	1.6	105.5	-42.8	229.2	-66.3
Sattahip	30.7	1.1	66.6	-105.3	176.9	-177.7
Rayong	30.9	1.2	95.4	-103.2	210.8	-196.9
Chanthaburi	30.0	1.7	289.8	-102.7	392.3	-252.4
Khlong Yai	29.1	0.9	459.8	33.1	873.1	22.5
Over the area	30.9	1.7	147.8	-76.1 -34%	270.7	-159.4 -37%

- NOTES :
- 1) Mean temperature is the average of daily dry-bulb temperature
 - 2) "T" is trace, rainfall amount less than 0.1 mm.
 - 3) "blank" is incomplete data.
 - 4) Temperature and rainfall are preliminary data.

Monthly Current Report
Rainfall and Accumulative Rainfal
May 2016

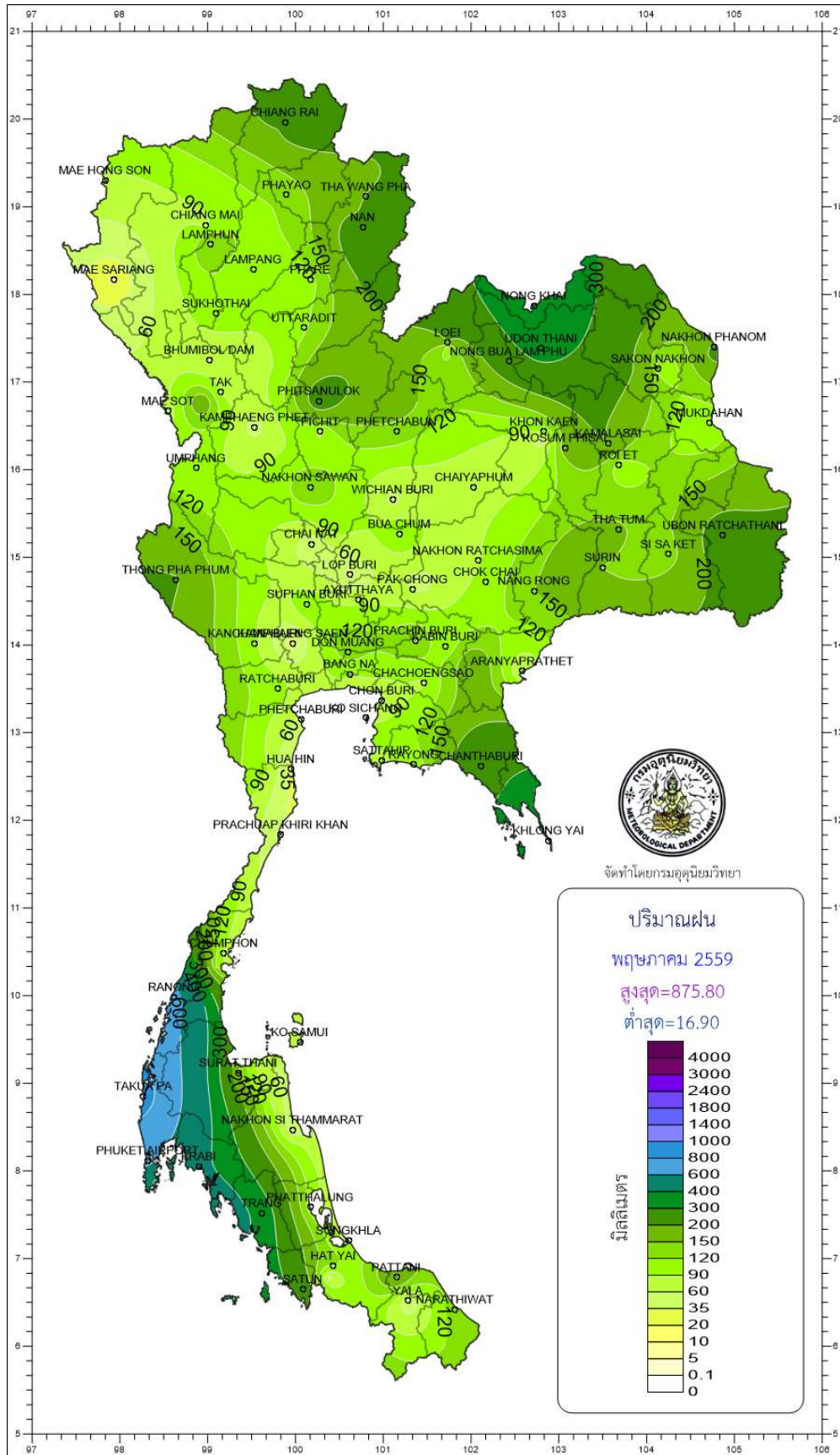
Southern Thailand, east coast

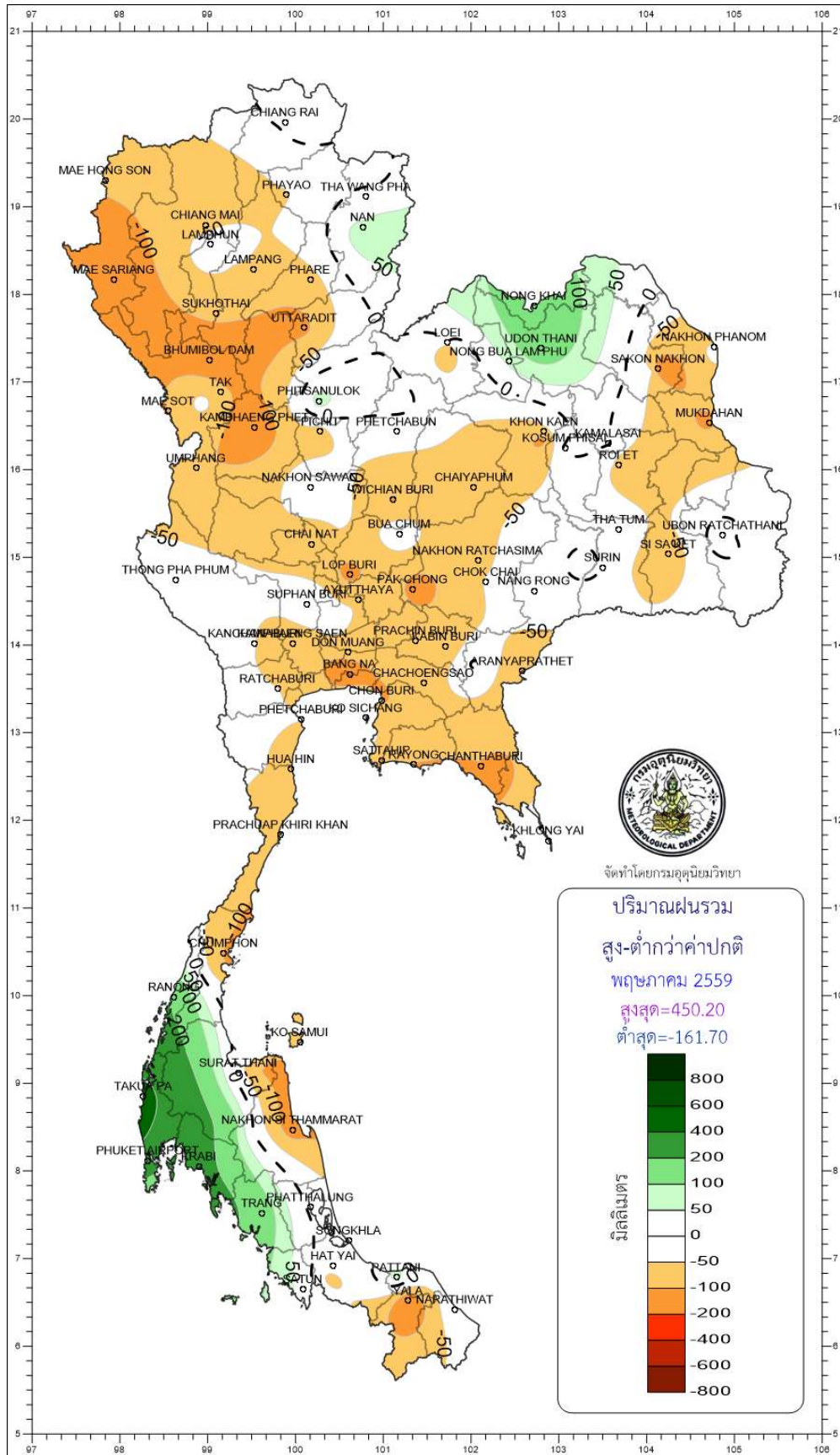
Station	Temperature (°c)		Rainfall (mm)		Accumulative rainfall (mm) Since 1 January	
	Mean	Above or below normal	Actual	Above or below normal	Actual	Above or below normal
Phetchaburi	31.3	1.9	49.9	-49.6	70.5	-114.3
Hua Hin	31.0	1.7	17.1	-91.8	62.2	-174.1
Prachuap Khiri Khan	30.3	1.4	29.9	-97.0	219.1	-81.3
Chumphon	29.4	1.4	87.5	-103.3	292.6	-185.3
Surat Thani	29.5	1.8	148.6	-29.4	237.7	-86.8
Ko Samui	30.3	1.4	78.3	-77.6	245.2	-215.2
Nakhon Si Thammarat	29.5	1.3	44.4	-129.4	277.4	-306.7
Songkhla	29.8	1.0	82.2	-37.4	300.9	-76.9
Hat Yai Airport	28.7	0.9	124.2	-23.5	284.6	-135.0
Pattani Airport	29.1	0.9	206.9	69.4	283.7	-60.7
Narathiwat	29.5	1.3	137.0	-5.1	501.3	13.7
Over the area	29.9	1.4	91.5	-52.2 -36%	252.3	-129.4 -34%

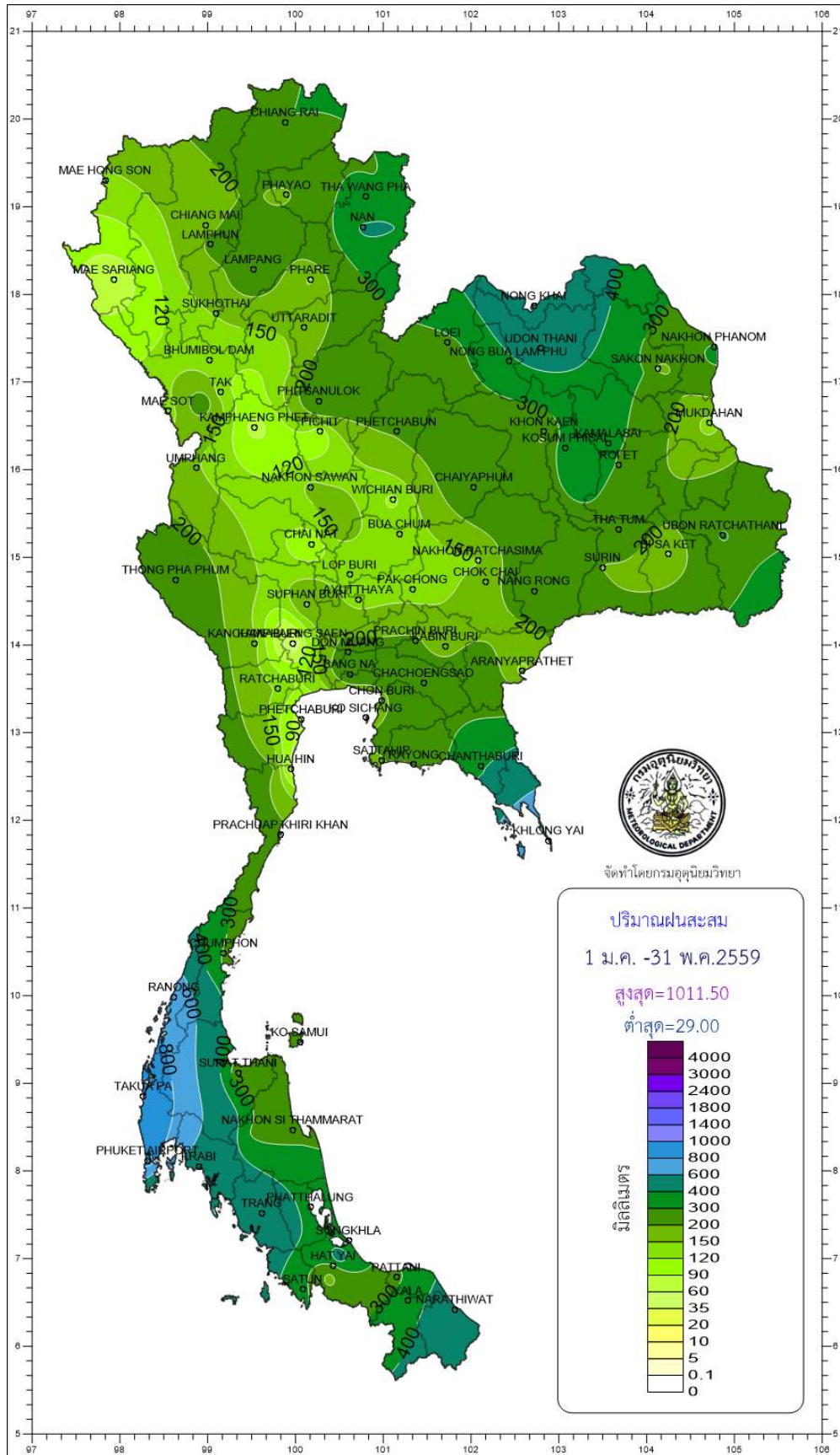
Southern Thailand, west coast

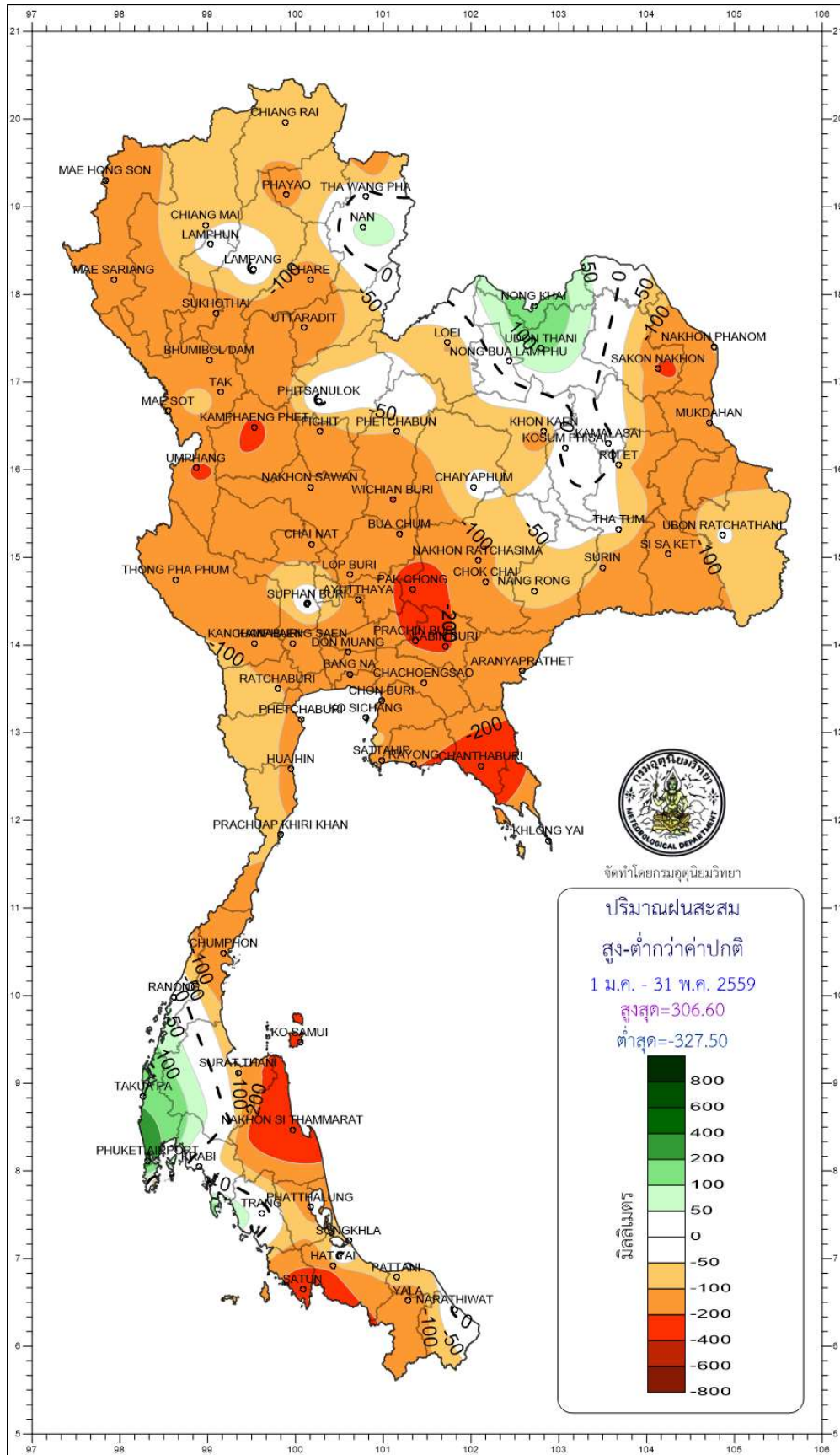
Station	Temperature (°c)		Rainfall (mm)		Accumulative rainfall (mm) Since 1 January	
	Mean	Above or below normal	Actual	Above or below normal	Actual	Above or below normal
Ranong	28.9	1.2	677.4	180.8	776.2	35.8
Takua Pa	28.4	0.5	875.8	438.3	1011.5	168.9
Phuket	29.8	1.0	387.5	128.0	453.3	-76.8
Phuket Airport	29.5	1.1	652.3	370.8	905.8	306.6
Ko Lanta	29.7	1.0	514.4	269.6	551.6	92.4
Trang Airport	29.0	1.3	363.4	145.9	529.0	35.1
Satun	28.7	0.6	268.0	34.7	329.8	-298.5
Over the area	29.1	0.9	534.1	224.0 72%	651.0	37.6 6%

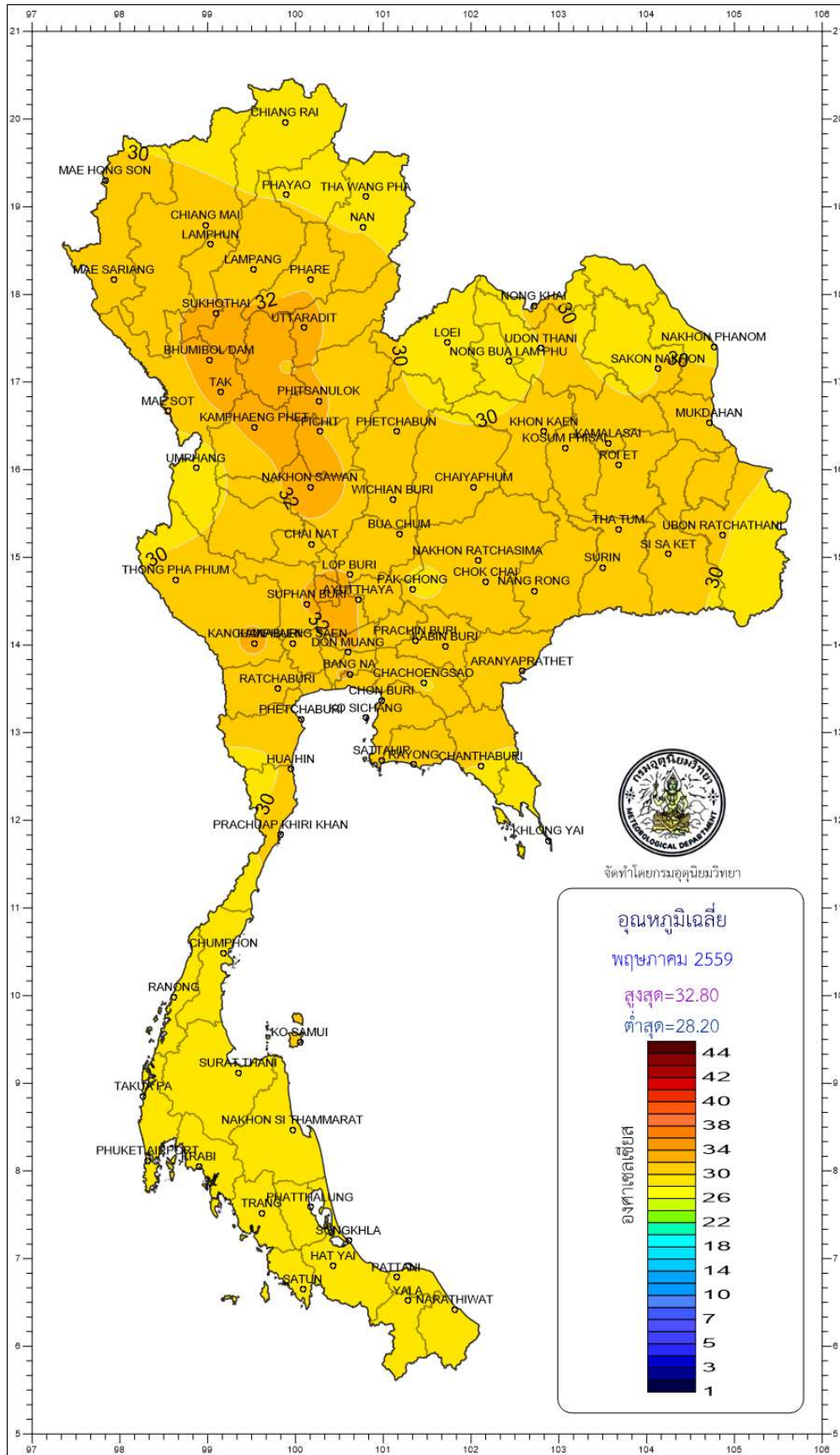
- NOTES :
- 1) Mean temperature is the average of daily dry-bulb temperature
 - 2) "T" is trace, rainfall amount less than 0.1 mm.
 - 3) "blank" is incomplete data.
 - 4) Temperature and rainfall are preliminary data.











จัดทำโดยกรมอุตุนิยมวิทยา

